



**REGIONAL SPECIALISED METEOROLOGICAL CENTRE-TROPICAL CYCLONES, NEW DELHI
TROPICAL WEATHER OUTLOOK**

DEMS-RSMC TROPICAL CYCLONES NEW DELHI DATED 17.08.2024

TROPICAL WEATHER OUTLOOK FOR NORTH INDIAN OCEAN (THE BAY OF BENGAL AND THE ARABIAN SEA) VALID FOR NEXT 168 HOURS ISSUED AT 0600 UTC OF 17.08.2024 BASED ON 0300 UTC OF 17.08.2024.

BAY OF BENGAL:

YESTERDAY'S LOW PRESSURE AREA OVER NORTH BAY OF BENGAL AND ADJOINING AREAS OF BANGLADESH-WEST BENGAL COASTS LAY OVER SOUTH BANGLADESH & NEIGHBOURHOOD AT 0830 HRS IST OF TODAY, THE 17TH AUGUST 2024. THE ASSOCIATED CYCLONIC CIRCULATION EXTENDS UPTO 7.6 KM ABOVE MEAN SEA LEVEL TILTING SOUTHWESTWARDS WITH HEIGHT.

IT IS LIKELY TO MOVE SLOWLY NORTH-NORTHWESTWARDS AND BECOME A WELL-MARKED LOW PRESSURE AREA OVER BANGLADESH AND ADJOINING GANGETIC WEST BENGAL BY 19TH AUGUST. THEREAFTER, IT IS LIKELY TO MOVE WEST-NORTHWESTWARDS ACROSS GANGETIC WEST BENGAL, JHARKHAND & ADJOINING BIHAR AND UTTAR PRADESH & ADJOINING MADHYA PRADESH DURING SUBSEQUENT 3-4 DAYS.

SCATTERED LOW & MEDIUM CLOUDS WITH EMBEDDED INTENSE TO VERY INTENSE CONVECTION LAY OVER BAY OF BENGAL & ANDAMAN SEA.

***PROBABILITY OF CYCLOGENESIS (FORMATION OF DEPRESSION) DURING NEXT 168 HRS:**

24 HOURS	24-48 HOURS	48-72 HOURS	72-96 HOURS	96-120 HOURS	120-144 HOURS	144-168 HOURS
NIL	NIL	NIL	NIL	NIL	NIL	NIL

***NOTE: EVERY 24HR FORECAST IS VALID UPTO 0300 UTC (0830 IST) OF NEXT DAY**

ARABIAN SEA:

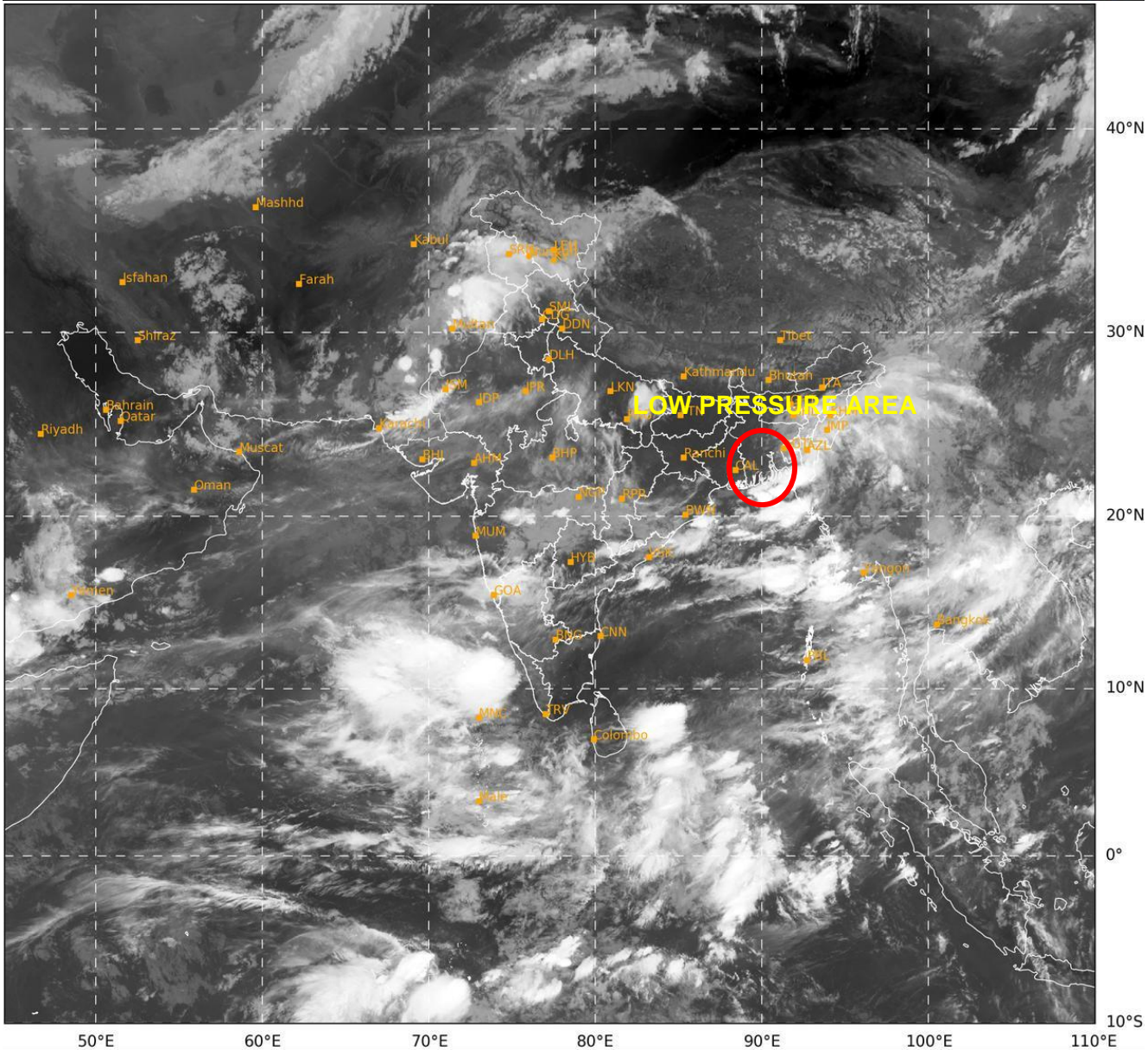
SCATTERED LOW & MEDIUM CLOUDS WITH EMBEDDED INTENSE TO VERY INTENSE CONVECTION LAY OVER EASTCENTRAL & SOUTHEAST ARABIAN SEA, LAKSHADWEEP ISLANDS AREA, MALDIVES & COMORIN AREA. SCATTERED LOW & MEDIUM CLOUDS WITH EMBEDDED WEAK TO MODERATE CONVECTION OVER REST ARABIAN SEA.

***PROBABILITY OF CYCLOGENESIS (FORMATION OF DEPRESSION) DURING NEXT 168 HRS:**

24 HOURS	24-48 HOURS	48-72 HOURS	72-96 HOURS	96-120 HOURS	120-144 HOURS	144-168 HOURS
NIL	NIL	NIL	NIL	NIL	NIL	NIL

***NOTE: EVERY 24HR FORECAST IS VALID UPTO 0300 UTC (0830 IST) OF NEXT DAY**

REMARKS: NIL



381

941

IMD,DELHI